



ECRI Announces 2017 Product Updates

ECRI continues to enhance the Rigel software products, adding features, increasing performance, updating support for existing and new interfaces, improving the user interface, and fixing any problems discovered. All Rigel products share a common code base, so applicable improvements are common to all products.

Rigel updates for all product versions are released continuously throughout the year, whenever new features or significant fixes are available. Users have the option to check for updates automatically or manually. Customers on software maintenance can download free updates at any time.

Most minor changes will increment only the software build number that appears in the program About box, but ECRI will still increment the main software version number to denote more significant changes.

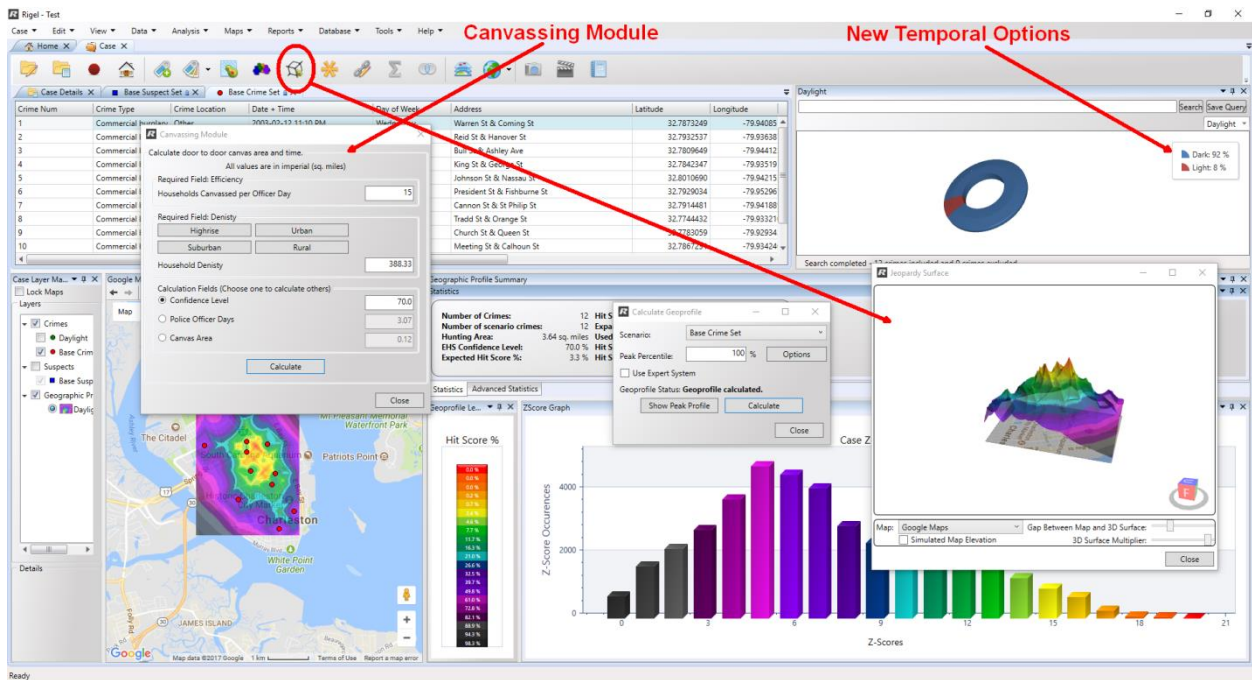
New product version numbers for 2017:

Rigel Workstation 2.4
Rigel Analyst 12.5 (note change from year numbers)
Rigel CIW 1.3
Gemini 2.4

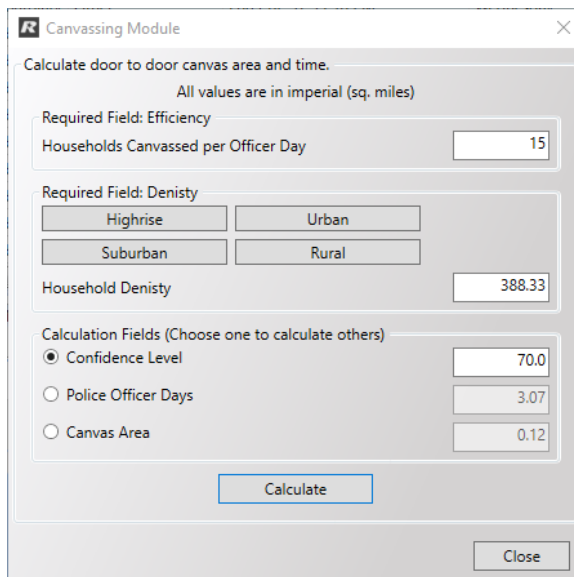
For more information, visit <http://www.ecricanada.com/products>

Or contact: sales@ecricanada.com, Tel: 604-718-2060

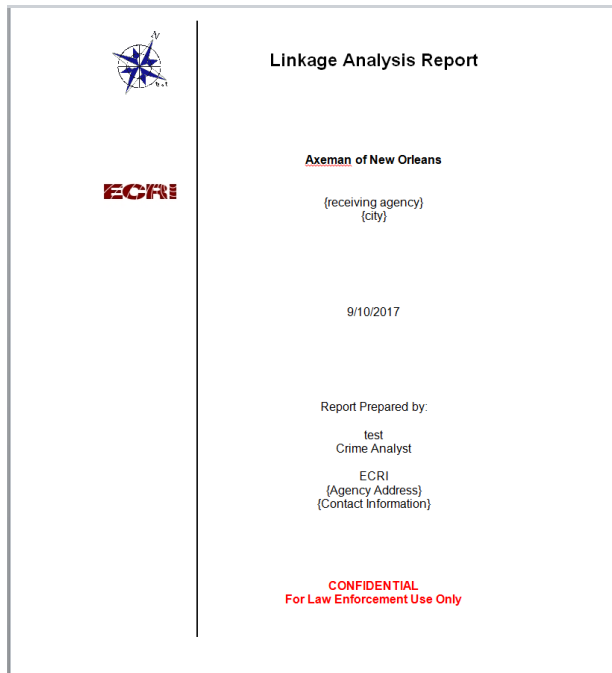
What's new in 2017



- Major speed increase when importing large numbers of crime and suspect locations (thousands) with many custom properties
- Local OpenStreetMaps server now supported to allow offline use of OpenStreetMaps maps (alternative to Microsoft MapPoint)
- Canvassing planning function (advanced feature improved from Rigel Profiler)



- New linkage analysis report template

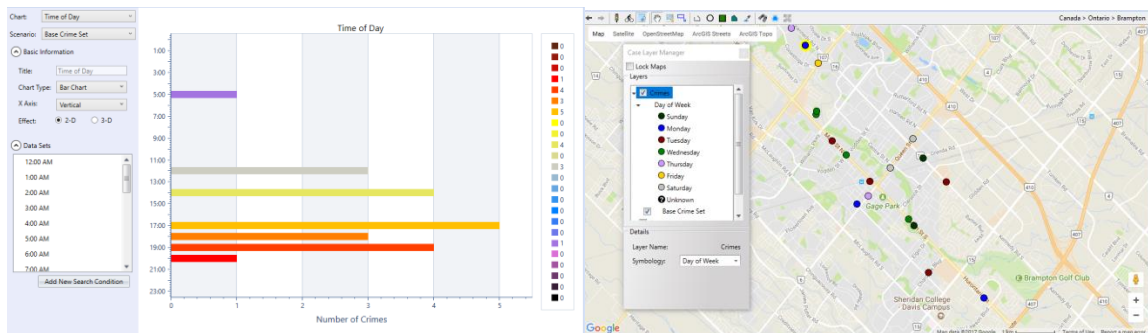


- Updated mapping software support:

- ESRI ArcGIS 10.5 (version update)
- latest Google Maps Sept 2017 (Google now deprecating support for older versions more rapidly)

(Note: Only Microsoft MapPoint, Google Maps, and ESRI ArcGIS support modules are included in the default installation package. Please contact ECRI Support if you require others.)

- Added local dawn/dusk time to available parameters for temporal analysis



- Drawing supported on Google Maps
- Support for SQL Server LocalDB 2016 version
- Many small user interface improvements and bug fixes.

